

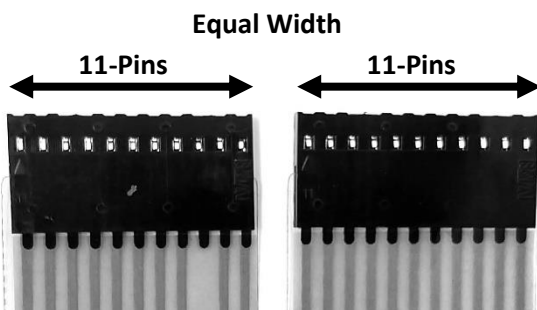
How to Install the Keypad

⚠ WARNING - ALWAYS MAKE SURE THE INPUT POWER IS COMPLETELY DISCONNECTED BEFORE ATTEMPTING ANY TROUBLESHOOTING PROCEDURES. ALL TROUBLESHOOTING SHOULD BE DONE BY A QUALIFIED PROFESSIONAL.

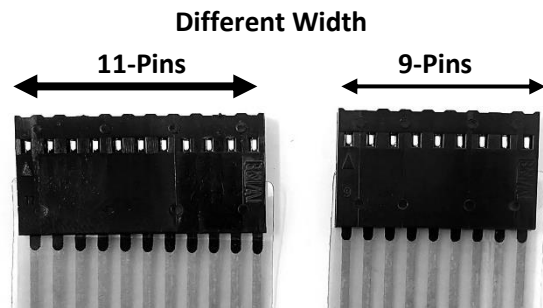
Before Replacement or Installation:

IMPORTANT: VERIFY YOUR KEYPAD VERSION

Before ordering a replacement keypad, check your equipment and tell your Support Team member know which version you have. Keypad versions are not interchangeable. Your keypad will have two ribbon cables with end connectors as follows:



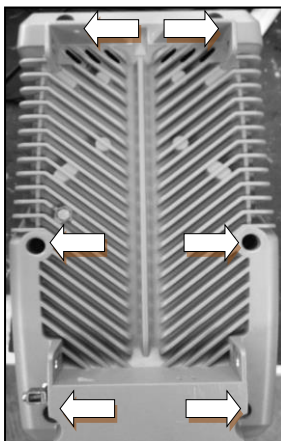
You have a:
RJNK15 Keypad



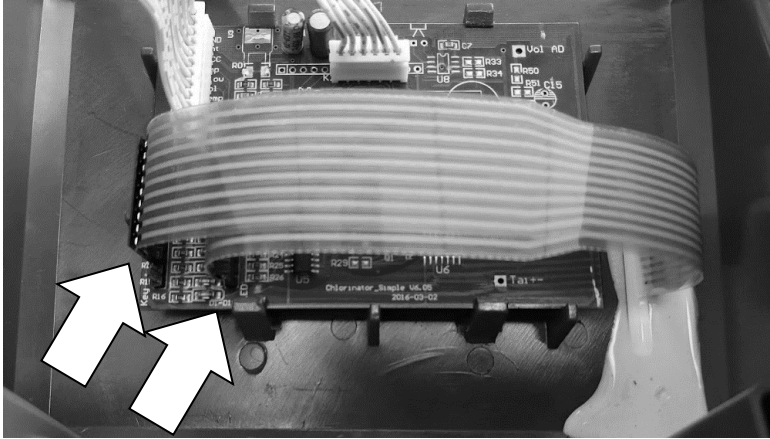
You have a:
RJNK16 Keypad

Installation Steps:

1. Disconnect the control panel from power and remove the unit from its wall mounting bracket.
2. Unscrew the six screws from the back of the control panel.



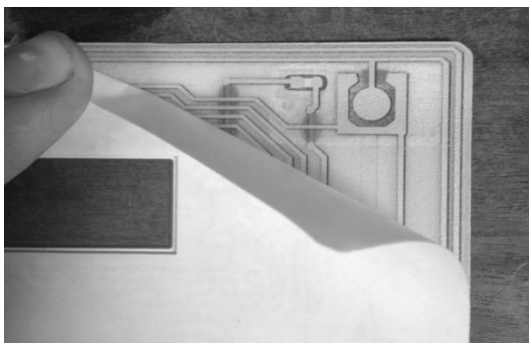
3. Remove the front control panel cover.
4. Disconnect the black/green ribbon cable from both terminals on the back of the display circuit board (see picture below).



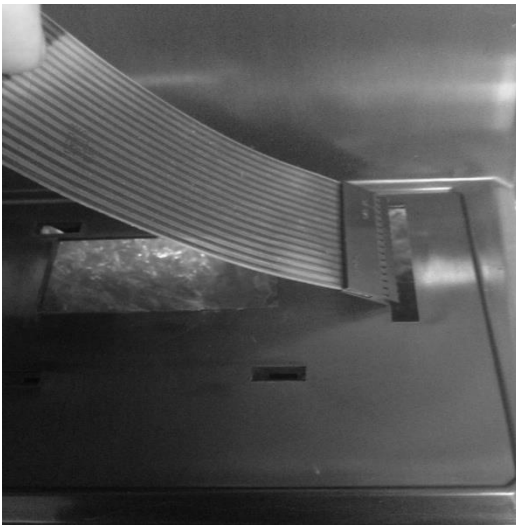
5. Use a flat head screw driver to peel back one of the four corners of the original keypad (see picture below).



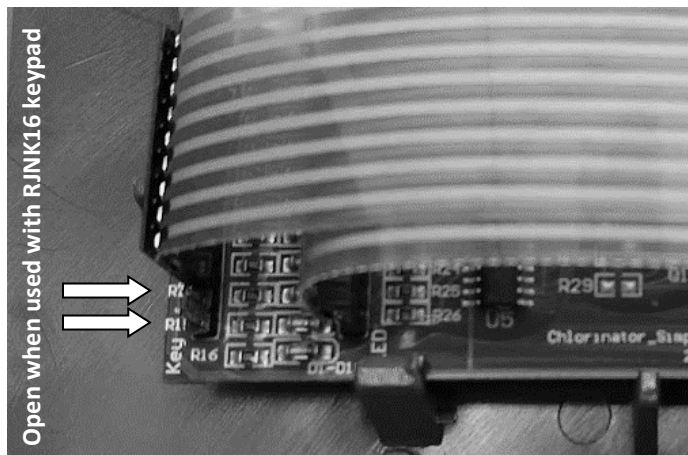
6. Peel off entire keypad away from the front blue cover.
7. Avoid excessive bending of the new keypad during the entire following process.
8. Peel of the paper sticker away from the back of the new keypad.



9. Place the green/black ribbon cables through the provided slot, and then press the new keypad onto the blue surface area.



10. Reconnect the black/green ribbon cable back to both terminals on the Display circuit board. If your keypad utilizes a RJNK16 keypad (11/9 pins), align outer cable towards end marked "R7"; this should leave open "R15" & "R16" near "Key"



11. Put the front cover back on. **IMPORTANT:** Make sure both ends of the two white ribbon cables have not been loosened and remain fully connected, and ensure that they do not get positioned over one of the screw holes.
12. Re-install the six screws on the back of the control panel, re-hang controller and connect to power.