

How to Install the Display Circuit Board

⚠ WARNING - ALWAYS MAKE SURE THE INPUT POWER IS COMPLETELY DISCONNECTED BEFORE ATTEMPTING ANY TROUBLESHOOTING PROCEDURES. ALL TROUBLESHOOTING SHOULD BE DONE BY A QUALIFIED PROFESSIONAL.

Installation Steps:

1. Disconnect the control panel from the black wall mounting bracket.
2. Lay unit on a flat surface and unscrew the six screws from the back of the control panel (Figure 1).
3. Remove the front control panel cover and two white ribbon cables (Figure 2). Turn the front control panel cover over to see the display circuit board (Figure 3).
4. Disconnect the keypad's clear/black/green ribbon cables from the back of the display circuit board (Figure 4).
5. Remove the existing display circuit board by pulling from one edge to pop it out of the clips that hold it on place (Figure 5).
6. Install the new circuit board by placing the bottom side in first and then press in the top making sure the circuit board is completely secured into the four clips.
7. Reconnect both sets ribbon cables making sure the orientation is correct. (Figure 2 and 4)
8. Put the front cover back on making sure the white ribbon cables do not get positioned over one of the six screw holes.
9. Reinstall the six screws on the back of the control panel.
10. Remount the control panel back on the mounting bracket.

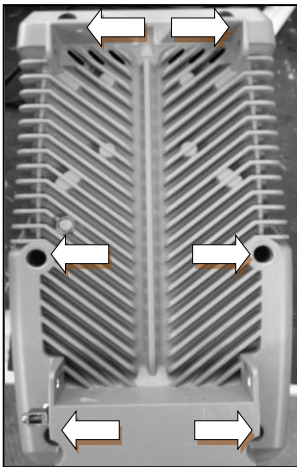


Figure 1



Figure 2

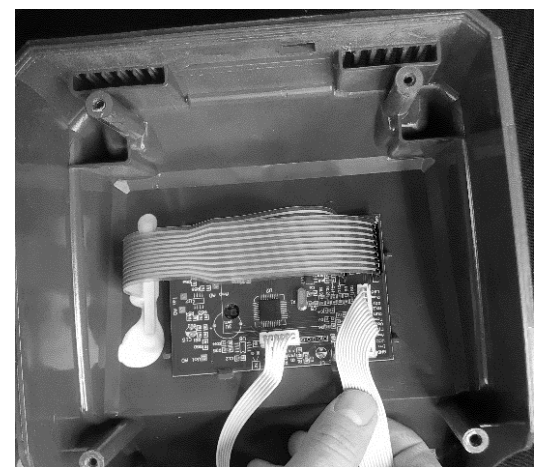


Figure 3

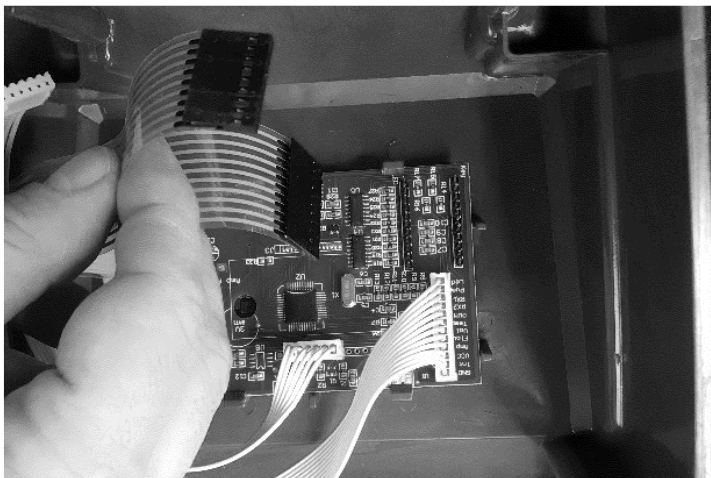


Figure 4

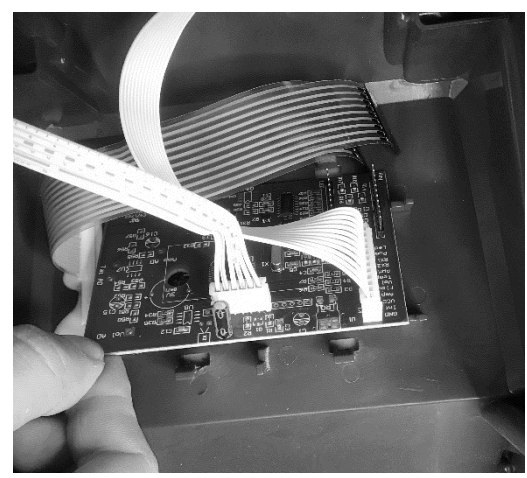


Figure 5